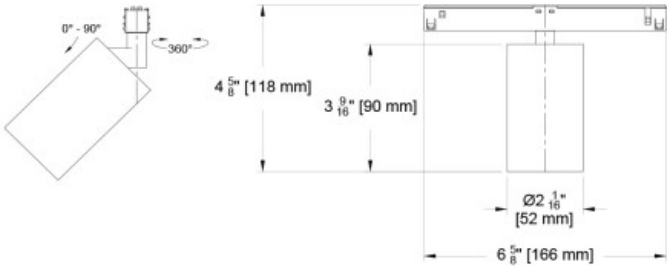


The Yashar Family

Welcome to the Yashar Low Voltage Scope Vardi track accent light, for use with our 48 volt low voltage track. The accent light, a derivative of the Scope Vardi Monopoint, is the smallest head in our track offering. It features integral drivers mounted in the track adaptor, including 0-10 volt, and DALI dimming options. Sources include static white LEDs in a variety of color temperatures, as well as our proprietary Ambient Dim chips. In addition, all of the finish options available in the Monopoint are available in the Yashar version.



PROJECT: TYPE:  
SPECIFIER: DATE:

Key Points (YSLH-SCV)

Housing

- Track accent head for use in Yashar Low Voltage Track.
- Adjustable 360° degree rotation and 90° degree tilt.
- 40 finish options, including anodized, brass, painted + Custom/RAL#.
- Precision CNC machined aluminum in New Jersey.
- Track mounted with integral drivers in track adaptor fitting.

Source / Optics

- 2 beam spreads - 15° and 30°
- Up to 748 delivered lumens
- <2 MacAdams Ellipses (<2 SDCM) for fixed white
- 2700, 3000, 3500, 4000K, Ambient Dim in three CCT ranges.
- 90+ CRI, 60+ R9 Standard, 95+ CRI, 90+ R9 available with Ambient Dim option
- **TITLE 24** Supports CA Title 24 part 6 Requirements to JA8
- Lifetime: L87B3>55,000 hours at 40°C Ambient

Driver And Control

- Integral 48 volt track adaptor drivers in 0-10V or DALI protocol.  
DALI control enables individual control of each fixture.

Finish Options - See finish guide for full spectrum of colors

PXX- Powder Coat Paint examples



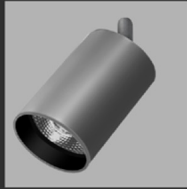
W White Paint P13 Moog Bronze

AXX- Anodize finish examples



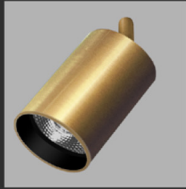
A01 Black Anod. A32 Clear A20 Blue

AMXX- Matte Anodize



AM32 Clear

BXX- Brass finish



B05 Satin Brass

Beamspreads		15°					30°				
	System watts (W)	Delivered Lumens (lm)	Lumens/ Watt	UGR	Peak CD	10% Field	Delivered Lumens (lm)	Lumens/ Watt	UGR	Peak CD	10% Field
Citizen C5	6	462	77	6	4939	29°	464	76	8	1549	49°
Citizen C9	9	707	79	10	6374	32°	748	84	10	2500	50°
Ambient Dim A5	6	311	52	8	2829	31°	315	52	6	985	50°
Ambient Dim A9	10	599	59	9	3633	40°	609	60	9	2051	50°

Ordering Codes

PROJECT:

SPECIFIER:

DATE:

TYPE:

QUANTITY:

Ordering Code Example: YSLH-SCV-C9-27-15-TD1-AM01-91L/97L

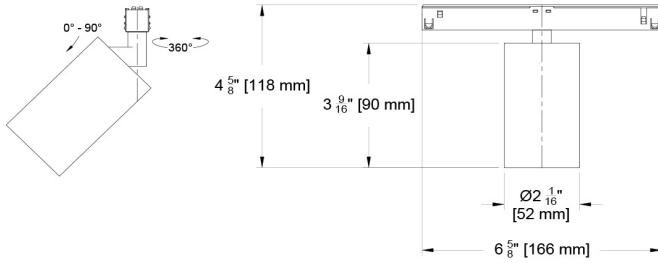
FIXTURE	SOURCE / WATTS	CCT	BEAM	DRIVER / CONTROL	HEAD FINISH	ACCESSORIES
YSLH-SCV						
Yashar Low Voltage Scope Vardi Track Head	<div>Citizen</div> <div>C5 6W 484Lm* 90+CRI, 60+R9</div> <div>C9 10W 748Lm* 90+CRI, 60+R9</div> <div>Ambient Dim™</div> <div>A5 6W 314Lm* 95+CRI, 90+R9 3000k to 1900k</div> <div>A9 10W 609Lm* 95+CRI, 90+R9 3000 to 1900k</div> <div>Supports CA Title 24 part 6 compliance to JA8 requirements</div> <div>*Based on 30° Beam</div>	<div>27 2700K</div> <div>30 3000K</div> <div>35 3500K</div> <div>40 4000K</div> <div>Ambient Dim™</div> <div>3019 3000-1900K</div>	<div>15 Spot</div> <div>30 Narrow Flood</div>	<div>TD1 0-10V 2.0%, (48-277V) linear</div> <div>TD2 DALI-2 1.0%, (48-277V) linear</div>	<div>AM01 Black Matte Anodize^</div> <div>AMXX Specialty Matte Anodize Color^</div> <div>AM1-AM36</div> <div>A32 Clear Anodize^</div> <div>AXX Specialty Anodize Color^</div> <div>A1-A36</div> <div>W White Paint^</div> <div>PXX Specialty Paint Color*</div> <div>P01-P15</div> <div>B05 Satin Brass^</div> <div>BXX Brass Finishes*^</div> <div>B01-B07</div> <div>Note: Track adaptor furnished in White with W finish head. Other finishes furnished with a black track adaptor unless otherwise specified.</div> <div>^Stem comes in selected color</div> <div>* See Finish Guide</div>	<div>Reflector (lamp) Media</div> <div>91L Solite*</div> <div>97L Black Hexcel Louver*</div> <div>XXL Other Reflector (lamp) Media*</div> <div>Other</div> <div>STM Standard length 3/8" For custom size, indicate in inches</div> <div>LENS ACCESSORY VISUAL GUIDE LINK</div> <div>FINISH GUIDE LINK</div>

## Dimensions

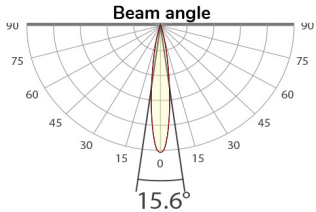
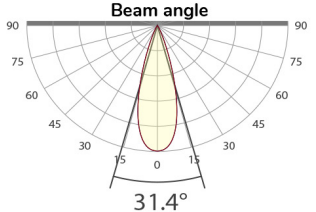
Yashar Low Voltage Scope Vardi Track Head

Standard Mount

(YSLH-SCV)



Photometric Table All data below are delivered lumens based on goniometer measurements of production representative product. All lumen values can vary +/- 10% from LED manufacturer rated nominal flux.

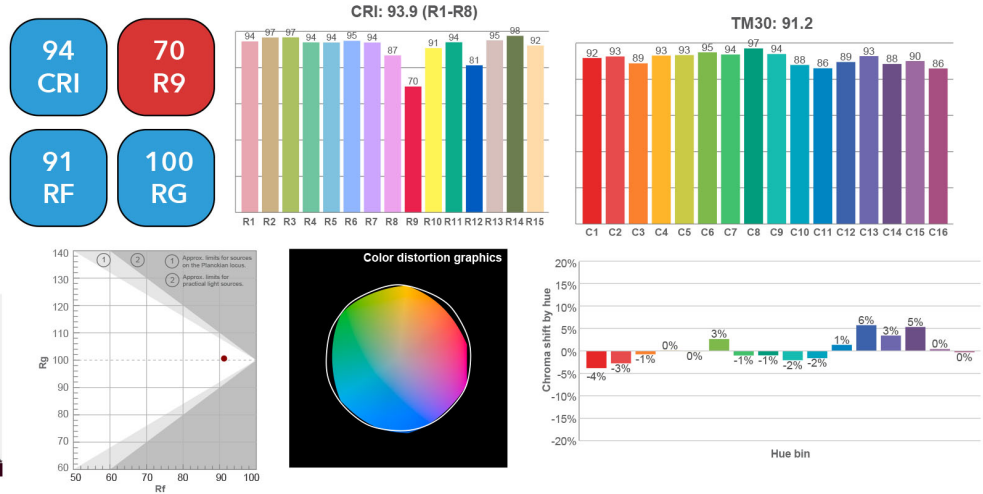
Beamspreads		15°					30°				
	System watts (W)	Delivered Lumens (lm)	Lumens/ Watt	UGR	Peak CD	10% Field	Delivered Lumens (lm)	Lumens/ Watt	UGR	Peak CD	10% Field
Citizen C5	6	462	77	6	4939	29°	464	76	8	1549	49°
Citizen C9	9	707	79	10	6374	32°	748	84	10	2500	50°
Ambient Dim A5	6	311	52	8	2829	31°	315	52	6	985	50°
Ambient Dim A9	10	599	59	9	3633	40°	609	60	9	2051	50°
CCT Multiplier											
CCT	Citizen										
2700	0.95										
3000	1.00										
3500	1.02										
4000	1.03										

## Color Data

All data below are delivered lumens. Color and flux information based on goniometer measurements of production representative product. All values can vary +/- 10% from LED manufacturer data range as listed on their datasheet.

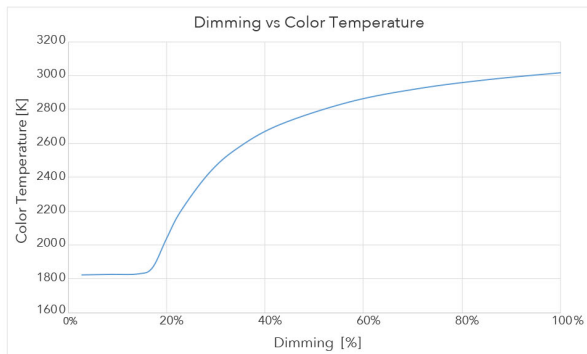
### Citizen Source C5, C9

- <2 MacAdam Ellipse (<2 SDCM)
- 90+ CRI and RF
- 60+R9, Hue Bin 1

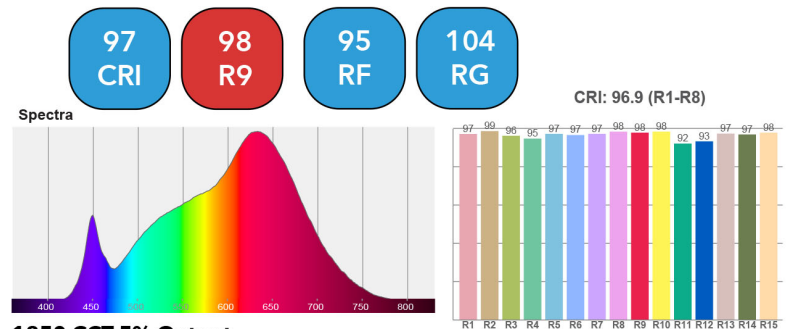


### Ambient Dim Source - A5, A9 (AD - 3000k to 1900k)

- <3 MacAdam Ellipse (<3 SDCM)
- 95+ CRI and RF
- 90+R9, Hue Bin 1
- Follows Black Body Locus through dimming range



#### 3000 CCT Full Output



#### 1850 CCT 5% Output

